

PEOPLE, PLANTS AND PRIDE...

Growing Together

BC COMMUNITIES IN BLOOM NEWSLETTER

IN THIS ISSUE:

- Registered Participants & Raffle Winners
- Plant Something & Bee Friendly Quiz
- Meet our 2017 Directors and Judges
- Gardens BC - Get your Garden Listed
- Important Dates & Upcoming Events

GOLD SPONSORS:



BRONZE SPONSORS



V.I.P. Soap Products

GREEN BUD SPONSOR

Sybertech Waste Reduction Ltd.
Home Hardware (National)

2017 COMMUNITY MEMBERSHIPS

City of Coquitlam • District of Mission
City of Burnaby • City of Castlegar

SUPPORTERS

Gardens British Columbia
Invasive Species Council of BC
BC Landscape & Nursery Association
BC Recreation & Parks Association
Sandman Hotel Group

BC Communities in Bloom

Suite 102 - 19289 Langley Bypass,
Surrey, BC V3S 6K1 (604) 576-6506

www.bccib.ca



[Friend us on Facebook](#)



**Celebrating
Canada's 150th**



Registered Participants

1. City of Whitehorse, YT
2. City of Abbotsford
3. Village of Lumby
4. District of Hope
5. District of Sicamous
6. Village of Cache Creek
7. Village of Salmo (Novice)
8. District of Chetwynd (Friends)
9. District of Kent (Friends)
10. City of Fort St. John (Friends)

11. District of Sooke (Friends)
12. Village of Fruitvale (Showcase)
13. Village of Clinton (Showcase)
14. City of Burnaby (Member)

National Finalists:

1. City of Coquitlam (& BC Member)
2. District of Mission (& BC Member)
3. City of Castlegar (& BC Member)
4. Village of Ashcroft
5. Sun Rivers Resort Community
6. City of Trail

There is still time to recognize special projects with a **Community Showcase Entry**
Entry deadline June 30, image submission August 31



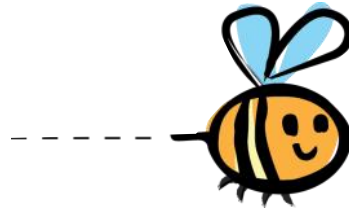
RESULTS
First Choice Winner # 072 - J. Cox, Surrey
2nd Choice Winner # 118 - C. Dohler, Smithers
3rd Prize # 171 - W. Robert, Vernon

Look for **PlantSomething Bee Friendly** in your Garden Centre

Garden Centres across British Columbia are promoting PlantSomething Bee Friendly to support biodiversity in our province. With over 400 native bees, PlantSomething Bee Friendly encourages gardeners to choose plants that provide the most pollen and nectar that bees (and other pollinators) need to survive. Visit www.plantsomethingbc.ca for list of participating garden centres, or visit your local garden centre for information on Bee Friendly Plants.

PlantSomething Bee Friendly Quiz:

1. Do male bees collect pollen?
2. Do bees need food all year?
3. Do all bees live in hives?
4. Are bees attracted to double bloom flowers?
5. How can you win a wheelbarrow of goodies?



Answers on page 4

2017 Judges Workshop and AGM

On April 22nd we gathered to educate, plan and summarize the past year's accomplishments.

This annual workshop is a fantastic opportunity to gather our key people coming from all areas of the province: Armstrong x2, Clinton, Castlegar, Coquitlam, Fort St. John, Hope, Mission, Peachland, Victoria, and Surrey x2.

At the very end of the day we conducted our Raffle Draw for three amazing prize packages, all worth \$1000 each. Thanks again to all our prize donors and purchasers. Funds raised go to support our volunteers.



2017 Board of Directors ↑

L to R top row:
 Darlene Kalawsky, Vice Chair; Teresa Williams; Kathy Reinheimer; Edward Stanford; Rea Smith; Yvette May, Chair. Seated: Bert Pulles; Shirley Fowler, Treasurer; Bruce Hobin, Secretary.

2017 Judges →

L to R top row:
 Floortje Molenaar; Vania Bowman; Teresa Williams; Rea Smith; Yvette May. Seated: Darlene Kalawsky; Bruce Hobin; and because they made me...Catherine Kennedy, E.D.

Event Location: Langley Sandman Hotel

Thank you to all our Volunteers!



gardens BRITISH COLUMBIA

BC Communities in Bloom with help from the National CiB organization, is a proud member of Gardens British Columbia and the BC Garden Tourism Coalition.

Registered National and Provincial Communities in Bloom participants receive recognition through our respective websites.



Gardens BC is a non-profit organization formed in 2008 to promote garden tourism throughout the province. Their goal is to tap into tourism trends and grow visitation to member gardens, and to increase public awareness of gardening in general.

They are working to bring as many gardens and garden attractions together as they can. Possible categories: Botanic, Public, Show, Arboretum, University, Historic House/Heritage Landscape, Attraction, Community/Urban Agriculture/Food, Municipal Park, and destination Garden Centres.

Gardens BC offers its members the ability to cluster and pool resources (think leveraged dollars!) for the purposes of joint promotion and marketing. More specifically, membership provides:

- A profile and presence on gardensbc.com – the only website of its kind promoting the full range of garden experiences visitors can have in BC.
- Website and social media presence will be scaled to membership level.
- Connection to national initiatives to promote gardens and garden tourism.
- Reach into foreign markets, particularly in Asia, thanks to the overseas efforts of staff from member gardens like Butchart Gardens and the Butterfly Gardens in Victoria.
- Exposure to the latest data and trends in tourism and garden tourism.
- Help to broaden the scope of garden centres. It helps move the perception of garden stores from retail entities to visitor destinations.



City of Abbotsford



District of Sicamous

Two membership levels that may be of interest to smaller communities with exceptional municipal parks, heritage properties or local gardens:

- Partner Garden Membership is \$75 per year
This honorary level provides a linked listing with contact information on the gardensbc.com website and social media.
- Listed Garden Membership is free on gardensbc.com. Name only on website with limited social media or when possible. Creates an opportunity to be aware of future GardensBC events.

More information about all the membership benefits and levels at:

www.gardensbc.com

Featured Membership Gardens: Butchart Gardens, Minter Country Garden Store, VanDusen Botanical Garden, Victoria Butterfly Gardens, Milner Gardens & Woodland, Hatley Park National Historic Site, Horticulture Centre of the Pacific, Tofino Botanical Gardens, UBC Botanical Garden, Nitobe Memorial Garden, and BC Communities in Bloom!

This is one of the reasons the BC CiB office needs your photo!
So that the rest of the world can see how fabulous your community is!



Answers:

1. No! Female bees are called the 'queen' or 'worker' bees and they are the ones that forage for pollen and nectar. Male bees are called 'drones' and are born for the sole purpose of helping with reproduction.
2. Yes! As soon as the bees emerge from their nests they are looking for food. It is important to provide early blooming plants; such as maples, crocuses and hellebores. Providing high pollen and nectar plants for bees during Spring, Summer, Fall, and Winter, will ensure that you are providing bees with enough food to sustain our long winters.
3. No! Many bees are solitary and they live in cavity or ground nests. Through urbanization, bees are starting to lose their ground habitat and need to seek shelter in other ways. One way you can help is by buying, or making, a mason bee house. Ask your local garden centre for details.
4. Double bloom flowers are difficult for bees and pollinators to navigate. Try to choose single bloom flowers to keep your garden bee friendly.
5. Take a photo and share it on Instagram, Twitter, or Facebook with the tag #BCplants. Be creative and try to capture a bee in your garden. Tip: Make sure your settings are set to public!

Upcoming Events:

- June 16 - National Garden Day with Garden Days June 9-18, 2017
- July 17-21 Possible Evaluation Dates for Provincial participants
- August 31 - Community Showcase final submissions due
- Sept. 27-28 - CanWest Hort Expo with special entry for CiB
- Sept. 28 - BC CiB Provincial Awards Dinner & Presentation



Register your [Garden Days Activities](#)

Garden Day Declaration for your Community

SAVE THE DATES SEPTEMBER 27 - 28, 2017

Provincial Awards Dinner & Presentation

6pm September 28

at the Sandman Hotel & Suites Abbotsford 32720 Simon Ave.

CanWest Horticulture Expo

(Wednesday & Thursday) Tradex, Abbotsford.

Get inspired, enjoy the visual delights, see over 200 tradeshow booths, learn something new with session speakers or special symposium topics. New product showcase, Plant I.D. Contest, Outdoor Equipment Zone.

Special accommodation rates. Tradex is at the Abbotsford Airport so this event is very accessible for communities around the province. (more info TBA)

OPERATION RELEAF - FORT McMURRAY

At the 2016 National Symposium and Awards in Regina last fall, the Leduc Communities in Bloom committee encouraged the "CiB family" to join them in providing assistance to our friends in Fort McMurray.

Tree Canada is providing the opportunity to do so through the Operation Releaf - Fort McMurray program (detailed below) . There's still time to make your donation through this [online link](#).

Thank you for your contribution. *Raymond Carrière*, Founding President



This year, Bees Matter is designating the week of June 5 to 12 as National Planting Week. Our goal is to get Canadians outside to plant pollinator-friendly gardens. We hope you'll join us during National Planting Week and plant a garden this spring to help support the important role that pollinators play in producing a bountiful harvest for many of Canada's farmers.

Remember to sign up for another free seed kit at www.beesmatter.ca if you want to take part.